

It helps now and then to step back and take the long view. We accomplish in our lifetime only a tiny fraction of the magnificent enterprise that is God's work. We plant seeds that one day will grow. We water seeds already planted knowing that they hold future promise. We lay foundations that will need to further develop. We cannot do everything, and there is a sense of liberation realising this. It enables us to do something and do it very well. It's a step along the way, an opportunity for the Lord's grace to enter and do the rest. We may never see the end result, but that is the difference between the master builder and the worker. We are the workers, not the master builders; ministers, not messiahs.

We are prophets of a future not our own.


Space



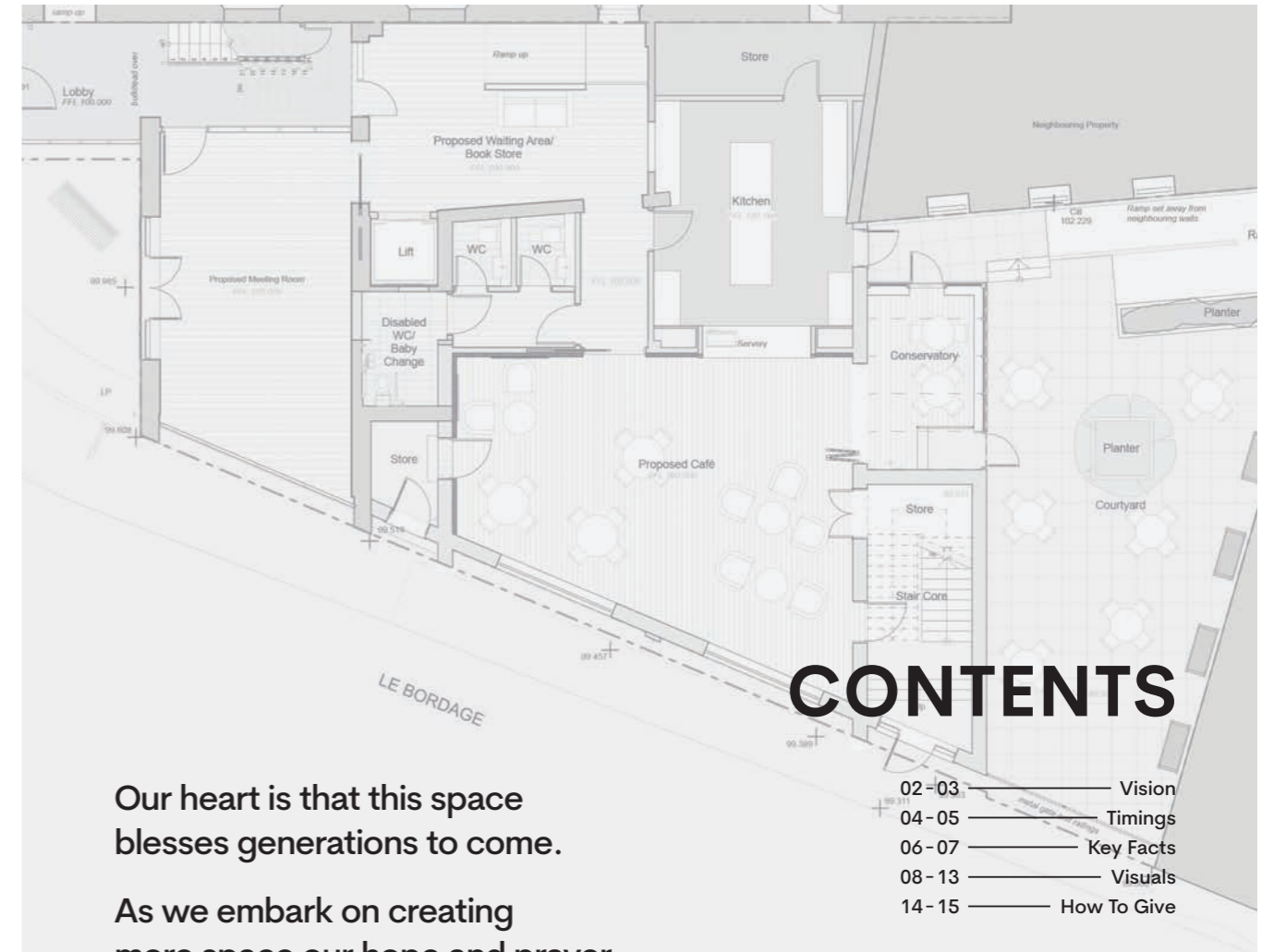
Henry's Yard  
Redevelopment  
Project

[www.holytrinity.org.gg/space](http://www.holytrinity.org.gg/space)

# SPACE TO HEAL

 [www.holytrinity.org.gg/space](http://www.holytrinity.org.gg/space)

Space



Our heart is that this space  
blesses generations to come.


As we embark on creating  
more space our hope and prayer  
is that you would partner with us  
in prayer and with finances to help  
plant and water seeds that hold  
future promise.

 Tyrrell Dowinton  
Associates  
Chartered Architects





(Pictured)  
Jon Honour (Vicar)  
standing in the current  
Henry's Yard.

 [www.holytrinity.org.gg/space](http://www.holytrinity.org.gg/space)

## VISION

This isn't just about a building, this is about an invitation to follow God's call to widen our hearts and to be a people who faithfully serve our Island - playing our part in God's future redemptive purposes here in Guernsey. Please consider joining us in this very practical moment on that journey as we seek to continue to lay foundations for the cultural and spiritual renewal of our Island.

With this building project it's our aim to provide more space for the following:

Welcome Space - An area that is more than just a corridor and provides a welcoming and comfortable space as a gateway to the rest of the Trinity complex.

Hospitality Space - Hospitality for the church and local community is a key value of who we are and what we do. Our present kitchen space is too small for what we currently do and what we would love to do and so we aim to double the size of the kitchen. Our community café is very popular and provides space for support, friendship and great food and drink! However, the current space used for the community café is shared with other activities and re-arranged at least 5 times a week. We aim to offer a more dedicated café space for this hospitality initiative.

Space for Youth and Children's Work - Without effective and fruitful youth and children's work then we are always one generation from extinction. Our current space for this ministry is adequate but more space would lead to innovative ways of reaching out to youth, children and families.

Outside Space - we would love to have a garden courtyard space that is full of creation and provides an environment for hospitality, games and contemplation.

Prayer Space - As a church we are called to be still before the Lord and wait patiently for Him and also to be a house of prayer for all nations. We would like to provide dedicated space for prayer, alone and together.

In-Between Space - We have great space for a large crowd of 200 and a small crowd of 30 but increasingly we need more meeting space for a medium sized crowd of 60 to 70 people for worship, teaching and discipleship.

Accessible Space - The provision of a lift and ramps will make more of our building accessible for those with mobility issues so that they feel included rather than excluded.

Counselling Space - With an increasing need for therapeutic intervention to help people find healing and wholeness we would like small spaces that create opportunity for that to happen.

Creative Space - As those who are created to be creative and in an age of increasing multimedia, we would like to provide dedicated space for filming videos, recording podcasts and creating images to aid in whole life discipleship.

Storage Space - With a lot of activity going on across the ground floor our current storage facilities are very limited which means that a lot of equipment is stored on the first floor and needs to come downstairs and then back up on a regular basis. More ground floor storage space would be a blessing!

# SPACE TO CREATE

 [www.holytrinity.org.gg/space](http://www.holytrinity.org.gg/space)

 Tyrrell Dowinton  
Associates  
Chartered Architects

Scan this QR  
code to view the  
proposed building  
plans online.




Alternatively you can pick up an A4 copy from the  
'Space' stand located at Trinity Church.

## TIMINGS

When Godfrey Taylor - some 40 years ago - was the vicar of Trinity he could see that the church needed more space. He prayed that Trinity might be able to buy the only piece of land that joined directly onto the church, the Bordage Stonemasons, known also as Henry's. But at that time the church had neither the money nor the opportunity to purchase the land as it continued to run as a family business for the next 40 years. The owners have now sold the land to Trinity, and we are pleased to say that we are now in the process of working out next steps for this gift of space.

Sometimes with prayer we must wait - sometimes a very long time. But the leadership at Trinity believe this is a prayer answered. A Kairos moment. A moment in time to provide more space for the church community, for the local community and the Island community.

# SPACE TO PRAY

 [www.holytrinity.org.gg/space](http://www.holytrinity.org.gg/space)

Space

**135% increase  
in total floor  
space**

This new building will more than double the space that we currently have in the Centre. In Town that is a real privilege. It's our prayer that God will fill that space with His plans and purposes.

**KEY  
FACT  
#1**

**75m<sup>2</sup> of new  
outdoor courtyard  
space**

Outdoor space in Town is a rarity. This courtyard will provide space for our congregations to use on Sundays and also for our local community to enjoy throughout the week.

**KEY  
FACT  
#3**

**New 60m<sup>2</sup> café  
space with additional  
15m<sup>2</sup> conservatory**

Our café continues to be an important, welcoming and accessible space. The larger, brighter area will provide a calm place for weary souls and our local community to gather.

**KEY  
FACT  
#5**

**55% increase  
in kitchen space**

We love to show hospitality towards people and providing food is a huge part of that. This extra kitchen space will enable us to extend our hospitality and welcome to more people.

**KEY  
FACT  
#2**

**Improved  
accessibility across  
90% of the centre**

The addition of a ramp and a lift will improve access to each of the floors and all rooms with the exception of the first floor meeting room. This will help us provide a welcoming space to all.

**KEY  
FACT  
#4**

**3 new  
medium-sized  
meeting rooms**

3 medium-sized meeting rooms will help us to provide flexible space for groups of between 30 to 70 people with dedicated space for youth and children's work.

**KEY  
FACT  
#6**





▷ WATCH  
Scan QR code to watch  
the walkthrough video.  
[holyltrinity.org.gg/space](https://holyltrinity.org.gg/space)

(Above)  
Facade of new  
building fronting  
Le Bordage.

(Top Right)  
New buildings with  
Juliette balconies  
and stone detailing.

(Bottom Right)  
The new courtyard  
would provide outdoor  
space for the church.







(Above)  
Room 1 will become a welcome space with a lift & accessibility ramp.



(Left)  
A purpose-built ground floor café will provide views on to Le Bordage.

(Top Right)  
A conservatory will provide access to the courtyard.

(Bottom Right)  
A much-needed green space courtyard will be available for all to enjoy with the inclusion of an accessibility ramp.







▷ WATCH  
Scan QR code to watch  
the walkthrough video.  
[holyltrinity.org.gg/space](https://holyltrinity.org.gg/space)

(Top Left)  
The conservatory  
will allow lots of light  
into the café space.

(Bottom Left)  
The flexible first floor  
meeting room space  
could be split into two  
rooms if needed.

(Above)  
Acoustic lining, lighting  
and presentation tools  
will make this a great  
multi-use space.





[www.holytrinity.org.gg/space](http://www.holytrinity.org.gg/space)

**Tyrrell Dowinton Associates**  
Chartered Architects

# HOW TO GIVE

Our fundraising goal is £1.5 million. If you would like to give to the 'Space' redevelopment project then you can do so in a number of ways.

You can do so online through one of the ways detailed below or you can give cash at the 'Space' giving stand available at Trinity Church. We would also love to encourage as many people as possible to prayerfully consider setting up a recurring payment. This would enable us to plan well and anticipate when we are likely to be able to put 'shovels in the ground'.

If you feel led to set up a recurring payment as a standing order then please scan the QR code below or visit our website.

Thank you for anything you choose to give towards this step of faith. We are eternally grateful. For an insight into how we are getting on in relation to our goal of £1.5m, please do visit our website where you can see giving progress.

[www.holytrinity.org.gg/space](http://www.holytrinity.org.gg/space)

**Give a one time gift under £100**



To give under £100 as a one time gift please scan this QR code and complete the process on our Sum Up portal. You can also give cash at the 'Space' stand at Trinity Church.

**Give a one time gift over £100**



To give over £100 as a one time gift please scan this QR code to be redirected to a giving form. Upon completion, a member of the finance team will be in touch.

**Set up a recurring payment**



Setting up a recurring payment would enable us to plan well. Please scan this QR code to complete our giving form. A member of the finance team will be in touch.

**Set up a loan note over £10,000**



If you would like to give a sum over £10,000 to be paid back over a period of time please scan this QR code to complete our giving form. A member of the finance team will be in touch.

Please note: If you are giving over £10,000, as a part of our regulatory commitment, a member of the finance team will be in touch to discuss a source of funds check.



# SPACE TO REST

 [www.holytrinity.org.gg/space](http://www.holytrinity.org.gg/space)

(Pictured)  
Outdoor courtyard  
with conservatory and  
green space.

Thank you for anything you  
choose to give.

Space